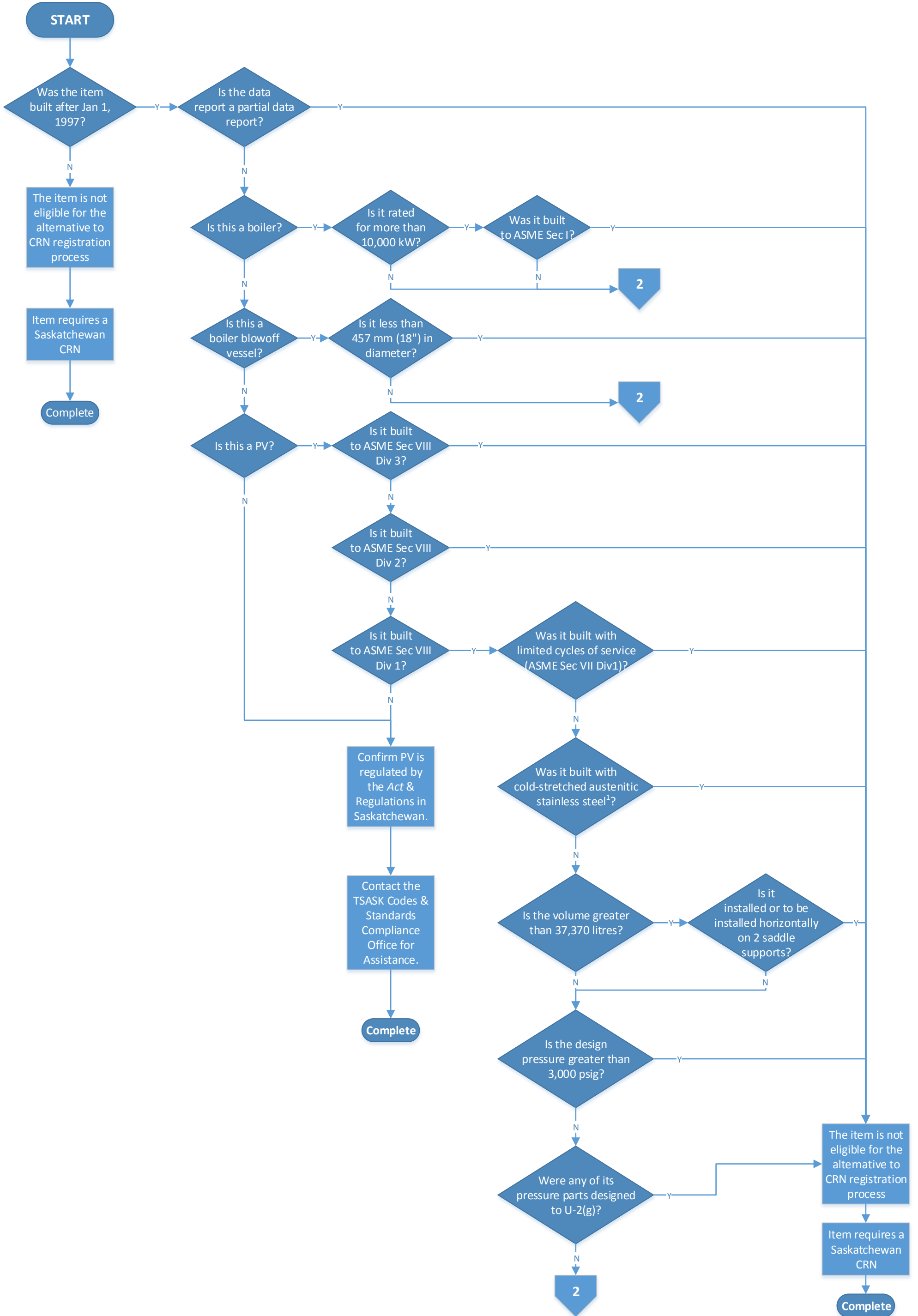


This flowchart assumes that the owner has confirmed the item is regulated under *The Boiler & Pressure Vessel Act* and Regulations of Saskatchewan. For the purposes of clarity, PV in the flowchart stands for Pressure Vessel.

¹Built in accordance with ASME Section VIII Division 1 2013 Edition or later (Appendix 44) or Code Case 2596 of earlier editions.



From Page 1

2 2

